



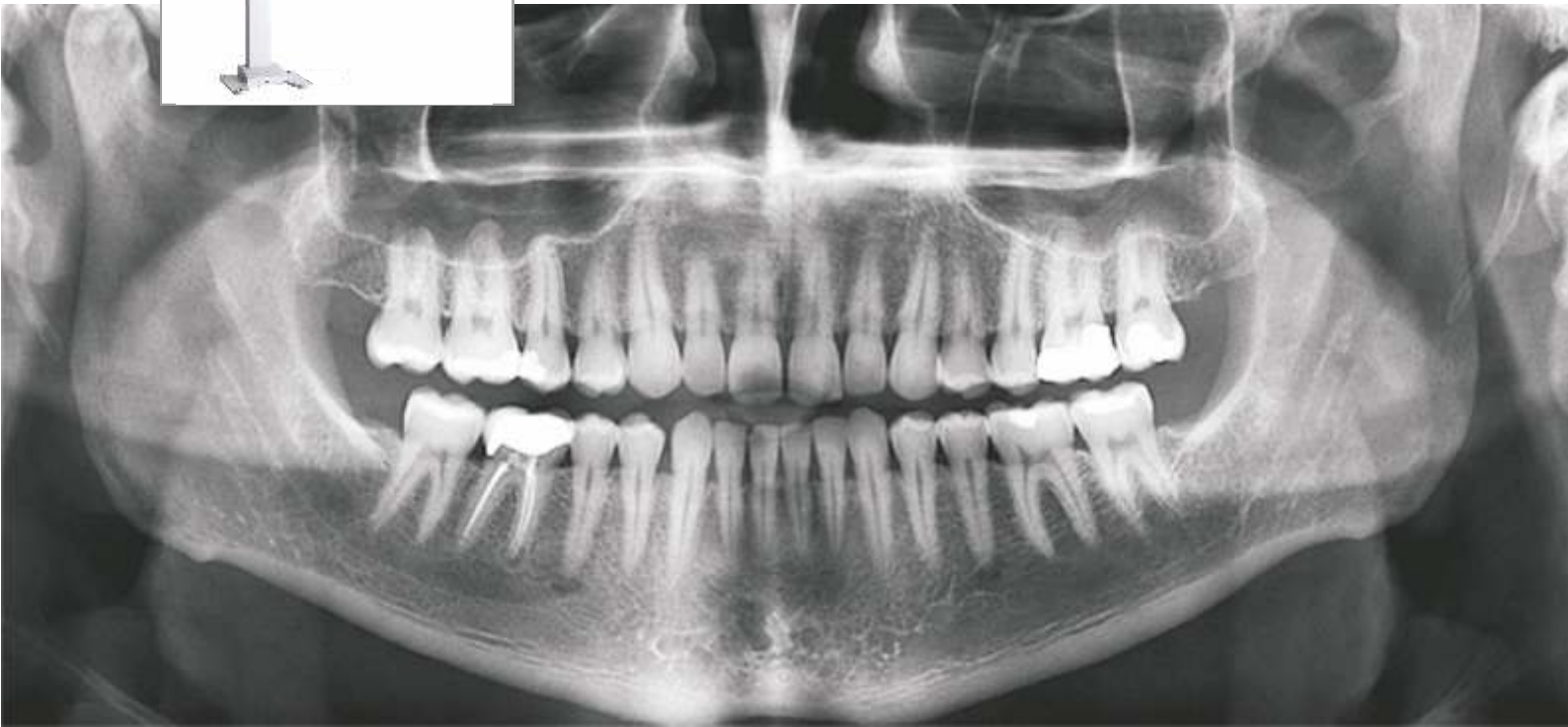
ADVAPEX - DENTOPAN-10 OPG

Latest Generation Orthopantomography X-ray System

approved for Film type and Digital Sensor (Analog and Digital) by AERB

Approved Model Name: **DENTOPAN-10** AERB Type Approval: **16-TA-105409**

Licensed **RJ-22795-MF-XRE-001** manufacturing-tested and supplied from The Samon Imaging Systems, INDIA



OPG


TMJ

CEPH



ADVAPEX - DENTOPAN-10

Technical Specifications

- Generator : Microcontroller based 80mm LCD Display, full wave rectified
- X-ray Tube : 0.5 mm x 0.5 mm fine focus dedicated X-ray tube 
- Filtration : min. 2.5 mm Al
- Anode Voltage : 50 to 85 kVp (steps of 5 kV)
- Tube Current : 10 mA
- Exposure Time : OPG -- 14 sec.
CEPH -- 8 to 50 mAs
- Film Size :

Flat Cassette Model

- OPG -- system supports any of the following sizes: 5" x 12", 6" x 12", 8" x 10", 10" x 12"
- TMJ -- system supports any of the following sizes: 5" x 12", 6" x 12", 8" x 10", 10" x 12" (4 spots on one film)
- CEPH -- 8" x 10" / 10" x 12"

■ Cassette :

Flat Cassette Model

- OPG -- Flat
- TMJ -- Flat
- CEPH -- Flat

- Magnification : OPG -- 1.2
CEPH -- 1.1

- Line Voltage : 230 Volts ± 10%

- Power Requirement : 2 KVA, Single Phase

- Space Required for installation with CEPH : H 7ft, W 6ft, D 3ft

- Space Required for installation without CEPH : H 7ft, W 3ft, D 3ft

PLEASE NOTE
ADVAPEX – Flat Cassette Model is the first and only Orthopantomography X-ray System in the World which gives freedom to use any of the following Flat Cassette with maximum convenience and enhances the useful life of the CR and / or film Cassettes



Cassette / Imaging Plate (IP) of 5"x12", 6"x12", 8"x10" & 10"x12" or equivalent cm size cassettes can be used directly in this Model and there is no need to remove the Imaging Plate (IP) from the CR cassette housing..

INTUITIVE TECHNOLOGY



Latest generation micro-controller combining intuitive technology means ease of use and better control

and a dedicated X-ray tube of 0.5mm fine focus ensures sharp images



Automatic TMJ



TMJ selection is fully automatic

Right & Left TM Joints of both open and closed mouth are automatically exposed on one films without disturbing the patient or cassette / machine.



True RMS Guard



A great safety feature constantly monitor power supply by sensing changes in True RMS value.

iDOSE

ADVAPEX OPG M15 is equipped with i-DOSE an unique radiation dose reduction feature - eliminates unwanted radiation to the patient. The exposure stops automatically in the no information zone, hence, reduces dose. A very useful feature in CHILD mode.



CEPH attachment is optional. All specifications are same as that of without CEPH model.

CEPH arm attachment for LAT & AP views



The Latest State-of-Art LCD Digital Display Micro-controller Technology based (fully-automatic OPG-TMJ-CEPH modes) Orthopantomography X-ray System offers ultimate convenience to the operator with 27 preset Anatomical Programs for consistent Image Quality on all examinations:

OPG / TMJ / CEPH

and for all patient categories:

	Men	Woman	Child
Thin	✓	✓	✓
Medium	✓	✓	✓
Thick	✓	✓	✓



CSCT (Cervical vertebrae Shadow Compensation Technique) ensures desired penetration in hi-density cervical region for uniform, detailed information of complete Jaw with dose adjustment even in the hi-density cervical region.

RADIO-DIAGNOSTIC CENTERS preference goes with

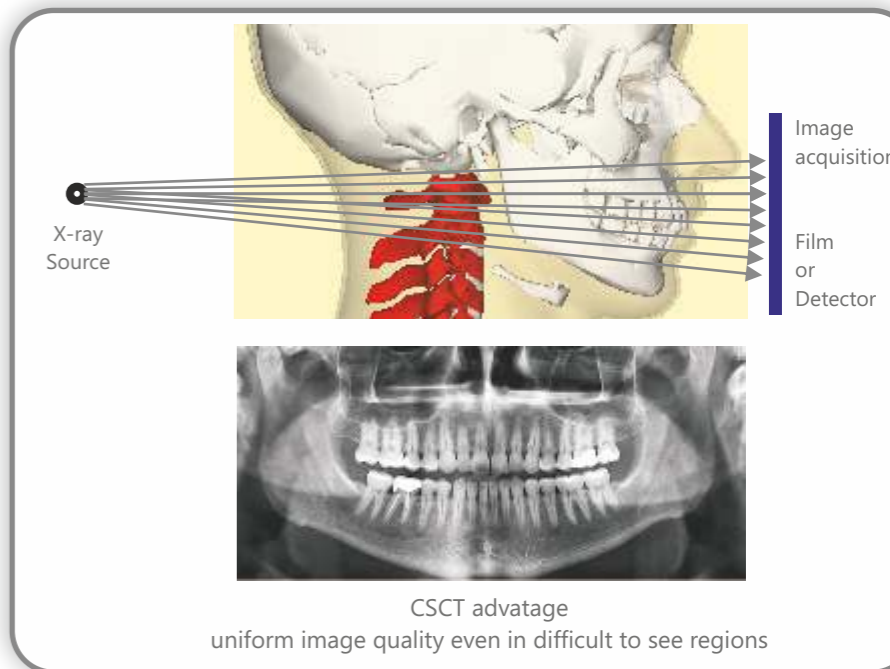
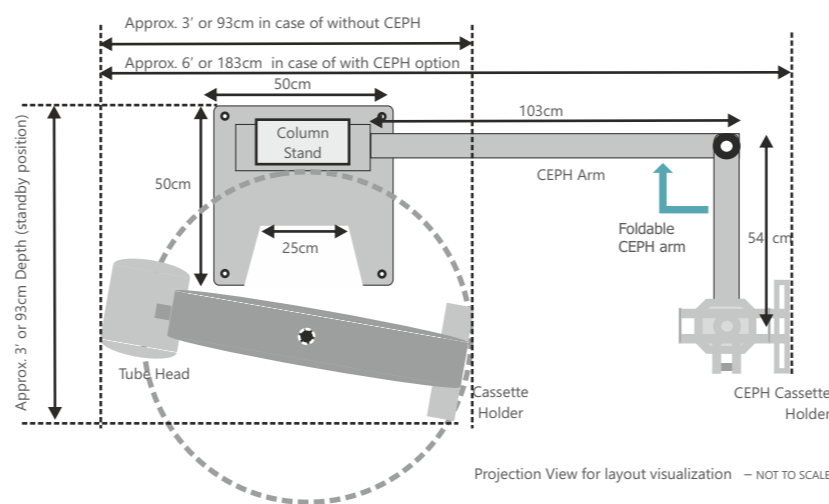
ADVAPEX OPG with CEPH
As all images OPG-TMJ-CEPH turns digital with the same CR & Hard Copy printer also adds to more footfall and better viability.



DENTAL CLINICS with small space can have **ADVAPEX** OPG without CEPH
As it fits in a small space of just 3ft x 3ft



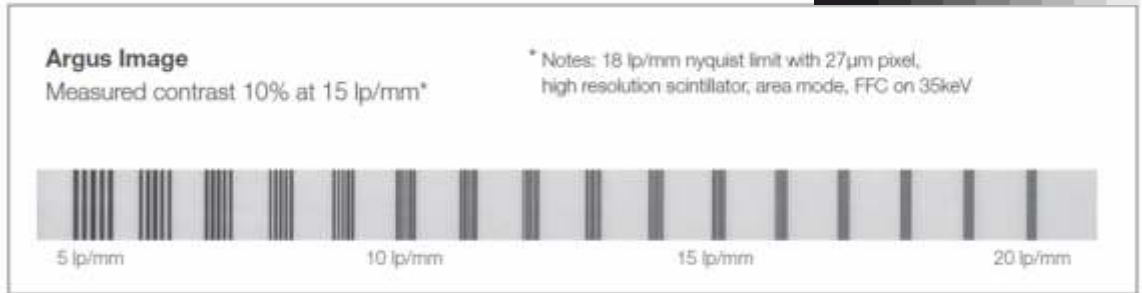
LED Indicator for Radiation



ADVAPEX - DENTOPAN-10 DIGITAL OPG

Latest Generation Direct Digital Orthopantomography X-ray System

Technical Overview



Detector Specifications

- Pixel Size : 27 µm effective
- Active Area : 151 x 6.9 mm
- Resolution : 2790 x 128
- : 18 lp / mm typ.
- Dynamic Range : 80 dB
- ADC : 16-bit (65,536 levels)
- Line Rate : 2kHz
- Charge Transport : 4 phase
- Data Interface : GigaBit Ethernet
- Communication : Web GUI / API

X-ray detector include high resolution scintillator technology and standard Ethernet connectivity, allowing images to be ported directly to a computer for processing. Passes through tough radiation sensor fabrication process to ensure longevity and image quality that is immune to X-ray radiation degradation over time. This means you will be able to acquire the same high quality images over and over, and get consistent results over the lifetime of your modality. Detector also uses the latest advancements in MEMS technology to maintain the typical gap between individual image sensors in assembly close to default pixel size. This also benefits detectors in terms of planarity, so that the same high image quality is maintained throughout the whole field of view of the detector.

Detector / Sensor
Country of origin
USA / Netherlands (Europe) / Japan

**FUTURE
UPGRADES**



affordable – assured – durable – scalable – profitable

here is an advantage for you even if you start with analogue system and as your practice or need grows you can migrate to Digital sensor

Diagnostic Centers which are already equipped with CR can start using their existing IP (Imaging Plates) for Digital Images. ADVAPEX - DENTOPAN-10 OPG makes their CR viable and profitable, since same resources are shared.

CR of all make – Agfa, Fuji, Carestream, Konika, iCRetc. all are compatible with ADVAPEX - DENTOPAN-10 OPG

ADVAPEX - DENTOPAN-10 OPG

approved for Film type and Digital Sensor (Analog and Digital)

Approved Model Name: **DENTOPAN-10** AERB Type Approval: **16-TA-105409**

Licensed manufacturing plant: The Samon Imaging Systems, INDIA **RJ-22795-MF-XRE-001**

A 5000 sq. meters ISO 9001:2000 Certified manufacturing, testing and supply unit at RICO Industrial Area, Bassi, JAIPUR, Rajasthan: 303301



www.apexsystems.in

**APEX Care Plus
Service**

Apex Medical Systems Pvt. Ltd.

Corporate Office:

A-218, Som Dutt Chambers-1
5-Bhikaji Cama Place
New Delhi: 110066
INDIA

Email: service@apexsystems.in
Land lines: +91 11 6563 7788, 2617 4069

PK Sharma +91 98110 57761
pksharma@apexsystems.in

Sanjay Chadha +91 98110 56769
sanjaychadha@apexsystems.in

Sanjay Pubral +91 98997 88501
Mahesh Verma +91 99970 18197

Apex reserves the right to make changes in specifications and / or to discontinue any product at any time without notice or obligation and will not be liable for any consequences resulting from the use of this publication.

